

WINTER

WEDDING CAKES



Ice blue fondant blankets this cake, like snow in the shadows cast by a winter sun. Real pinecones flecked with royal icing and glistening with sanding sugar are accented with finely wrought chocolate pine needles; they add a natural-looking texture to the cake's modern lines.



This cake is as magical as the season's first flurry. Snowflakes made from royal icing are miniature at the top of the cake and larger at the bottom, giving the impression of a gracefully drifting snowfall. The tiers are frosted smoothly with Swiss meringue to resemble tightly packed snow.



Clusters of spiky "petals" of soft meringue top the layers of this cake. The same meringue, spread smooth, covers the sides. Meringue not only looks lovely, it tastes delicious, especially when flavored with a few drops of your favorite extract or flower water.



This winsome wedding cake is decorated with paper trees and "snowballs" piped from frosting and topped with a marzipan snowman and snow-woman holding a replica of the bride's bouquet.

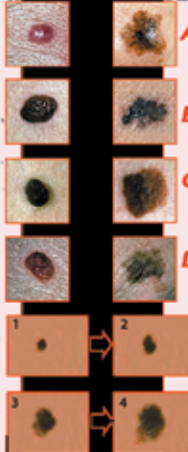
Warning Signs: The ABCDEs of Melanoma

Moles, brown spots and growths on the skin are usually harmless — but not always. The first signs can appear in one or more atypical moles. That's why it's so important to get to know your skin very well and to recognize any changes in the moles on your body. Look for the ABCDEs of melanoma, and if you see one or more, make an appointment with a dermatologist.

Medicare Accepted

courtesy www.skincancer.org

NORMAL ABNORMAL



Asymmetry - If you draw a line through this mole, the two halves will not match.

Border - The borders of an early melanoma tend to be uneven. The edges may be scalloped or notched.

Color - Having a variety of colors is another warning signal. A number of different shades of brown tan or black could appear. A melanoma may also become red, blue or some other color.

Diameter - Melanomas usually are larger in diameter than the size of the eraser on your pencil (1/4 inch or 6 mm), but they may sometimes be smaller when first detected.

Evolving - Any change- in size, shape, color, elevation, or another trait, or any new symptom such as bleeding, itching or crusting points to danger.

Think of "the ugly duckling" mole, aka "the outlier", as the lesion that, at a given moment in time, looks or feels different than the patient's other moles, or that over time, changes differently than the patient's other moles.

Collom & Carney Clinic
TEXARKANA

5002 Cowhorn Creek Road • Texarkana, TX
Ly Gaylor, M.D. • 903-614-3005
Board Certified Dermatologist



Ly Gaylor, M.D.